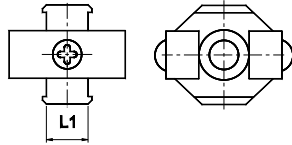


## AIR PREPARATION UNITS - ACCESSORIES

### Accessories - for Modular construction

Cat No APA - 01 - C

#### SPACER



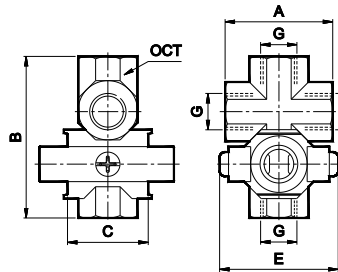
Adoptable to Model series	L1	Ordering No.
F13, L13, R13, FRC13	12	A2S01/MB
F14, L14, R14, FRC14	14	A2S02/MB
F15, L15, R15, FRC15	16	A2S03/MB
F17, R17, L17, FRC17	15	A2S04/MB



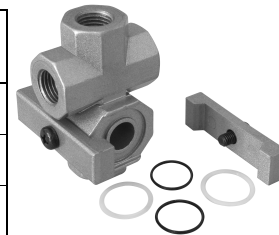
**How to order** :- Mention the ordering number required

Example :- Spacer for 3/8 Filter, Regulator, Lubricator series F14, R14, L14 - Ordering no : A2S02/MB

#### X SPACER ASSEMBLY - Mountable between FRL, FRC modular units - 4 way connector



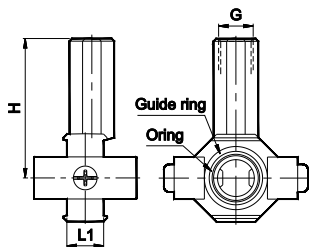
Adoptable to Model series	G	A	B	C	E	OCT	Ordering No.
FRLM13, FRCLM13	1/4	40	60	30	45	22	A2M01/MB
FRLM14, FRCLM14	3/8	45	66.5	35	55	27	A2M02/MB
FRLM15, FRCLM15	1/2	56	83	40	70	30	A2M03/MB



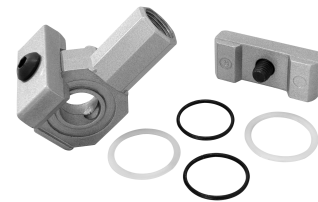
**How to order** :- Mention the ordering number required

Example :- X Spacer assembly for 3/8 FRLM, FRCLM Series : Ordering no : A2M02/MB

#### T SPACER



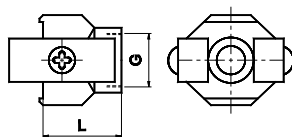
Adoptable to Model series	Size	G	L1	H	Ordering No.
F13, R13, L13, FRC13	1/4	1/8	12	50	A2T01/MB
F14, R14, L14, FRC14	3/8	1/4	14	53	A2T02/MB
F15, R15, L15, FRC15	1/2	3/8	16	52	A2T03/MB



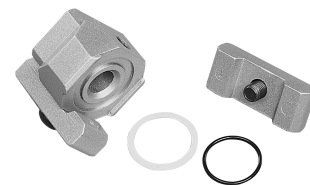
**How to order** :- Mention the ordering number required

Example :- T Spacer for 3/8 Filter, Regulator, Lubricator, FRC Series F14, R14, L14, FRC14 : Ordering no : A2T02/MB

#### PIPING ADAPTOR



Adoptable to Model series	G	L	Ordering No.
F13, L13, R13, FRC13	1/4	27	A2P01/MB
F14, L14, R14, FRC14	3/8	29	A2P02/MB
F15, L15, R15, FRC15	1/2	32	A2P03/MB
F17, R17, L17, FRC17	G3/4	35	A2P07/MB
	G1	35	A2P08/MB



**How to order** :- Mention the ordering number required

Example :- Piping Adaptor for 3/8 Filter, Regulator, Lubricator series F14, R14, L14 - Ordering no : A2P02/MB

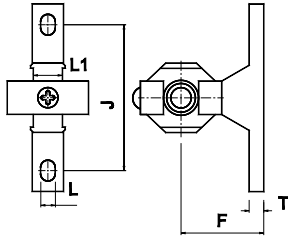
Subject to change

## AIR PREPARATION UNITS - ACCESSORIES

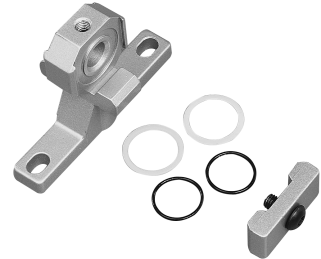
Accessories - for Modular construction

Cat No APA - 01 - C

### WALL MOUNTING BRACKET



Adoptable to Model series	L1	J	L	F	T	Ordering No.
F13, L13, R13, FRC13	12	50	7	35	7	A2W01/MB
F14, L14, R14, FRC14	14	70	7	45	7	A2W02/MB
F15, L15, R15, FRC15	16	90	9	55	9	A2W03/MB
F17, R17, L17, FRC17	15	100	12	70	10	A2W04/MB



**How to order** :- Mention the ordering number required

Example :- Wall mounting Bracket for 3/8 Filter, Regulator, Lubricator series F14, R14, L14 : Ordering no : A2W02/MB

### KIT FOR MODULAR CONSTRUCTION

For Modular construction, order accessories as given below

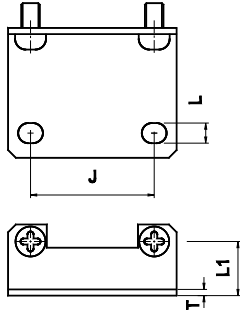
	Wall mounting bracket	Piping Adaptor
FRCLM	1	2
FRLM	2	2

## AIR PREPARATION UNITS - ACCESSORIES

### Accessories - CLAMPS

Cat No APA - 01 - C

#### CLAMP for FILTER, LUBRICATOR



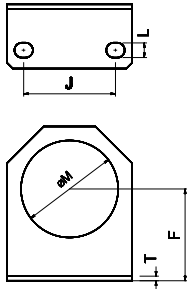
Adoptable to Model series	J	L	L1	T	Ordering No.
F13, L13	28	5.5	14	2	A2C31/MB
F14, L14	40	6.5	17.5	2	A2C32/MB
F15, L15	55	8.5	22	2	A2C33/MB
F17, L17	66	11	33	5	A2C34/MB



**How to order** :- Mention the ordering number required

Example :- Clamp for 3/8 Filter, Lubricator series F14, L14 - Ordering no : A2C32/MB

#### CLAMP for REGULATOR



Adoptable to Model series	ØM	F	L	J	T	Ordering No.
R13, FRC13	30.5	30	5.5	28	2	A2C01/MB
R14, FRC14	42.5	40	6.5	40	2	A2C02/MB
R15, FRC15	52.5	50	8.5	55	2	A2C03/MB
R17, FRC17	52.5	70	11	66	5	A2C04/MB



**How to order** :- Mention the ordering number required

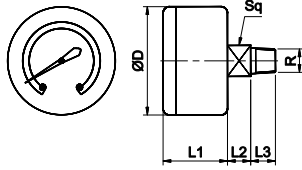
Example :- Clamp for 3/8 Regulator series R14, FRC 14 - Ordering no : A2C02/MB

## AIR PREPARATION UNITS - ACCESSORIES

### Accessories - Pressure Gauge

Cat No APA - 01 - C

#### PRESSURE GAUGE

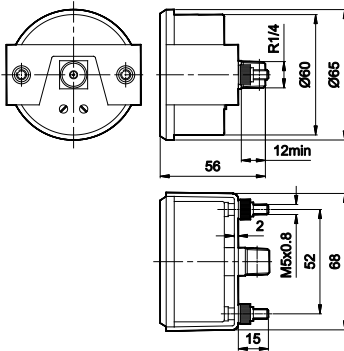


Thread R	Pressure range bar	Adoptable to Model series	ØD	L1	L2	L3	Sq	Ordering No.
R1/8	0 - 4	R13, R14, R15, FRC13, FRC14, FRC15	42	24 <sup>+1</sup>	9 <sup>+2</sup>	8 <sup>+2</sup>	11/12	A2G01/MB
	0 - 10							A2G02/MB
	0 - 16							A2G03/MB
R1/4	0 - 4	R17, FRC17	50	28	9 <sup>+2</sup>	13 <sup>+1</sup>	14	A2G07/MB
	0 - 10							A2G08/MB
	0 - 16							A2G09/MB

**How to order** :- Mention the ordering number required

Example :- Pressure Gauge for Regulator with Pressure range 0 - 10 bar : Ordering no : A2G02/MB

#### PANEL MOUNTING PRESSURE GAUGE



Thread	Pressure range bar	Adoptable to Model series	Ordering No.
R1/4	0 - 10	R17, FRC17	A2GP08/MB

**How to order** :- Mention the ordering number required

Example :- 1/4 Pressure Gauge for Regulator with Pressure range 0 - 10 bar : Ordering no : A2GP08/MB