

MARSH®

ST/ST Cased Absolute Gauges

Description

Stainless steel case absolute capsule gauge Models SSC / ABS

According to DIN EN 837-3

Nominal sizes, 100, mm Accuracy: Class 2

Features

Stainless steel case construction

Barometrically Compensated

Stainless steel bayonet locking case and bezel,

2 bar gauge overrange protection.

Protection to IP65

Usable at full scale

Inconel capsule

Ranges

0 - 25, 0 - 50, 0 - 125, 0 - 160, 0-1000 mbar

Applications

Petrochemical and chemical

Food and beverage

Gas industry

Machine and apparatus construction



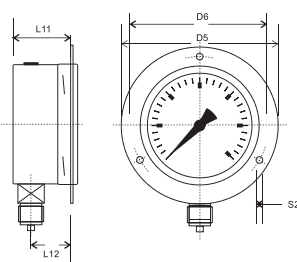
Specifications:

SSC / ABS

	100	160
Dial Size	100	160
Construction	Flush fitting bayonet locking case and bezel	
Measuring Element	Evacuated Capsule	
Ranges {bar}	0 - 25, 0 - 50, 0 - 125, 0 - 160, 0-1000	
Over-range limit	130% full scale, short periods	
Process Connection	1/4bsp, 3/8bsp, 1/2bsp according to EN837 1/4npt, 1/2npt, according to ANSI/ASME B1.20.1	
Material Construction		
Process Connection	Brass or Stainless steel AISI 316L	
Capsule	Inconel	
Case / Bezel Ring	Stainless steel AISI 304L	
Window	Toughened Instrument glass	
Dial	Aluminium, black figures on white, optional, other colours	
Pointer	Aluminium, black, balanced	
Movement	Brass	
Accuracy	Class 2 (2% F.S.D.)	
Permissible	Degree C	
Ambient Temp.	-15, +50	
Process Temperature	Min. -20, Max. +65	
Storage Temperature	-20, +60	
Temperature Effect	Max. 0,5% / 10 Deg C	
Protection	EN 60 529 IP65	
Filling Liquid	N / A	
Mountings	Direct bottom, direct back, surface, flush panel, panel fixing	
Weight dry / filled {kg}	1.0	1.4
Accessories	Snubber screw, special dial, special connection	

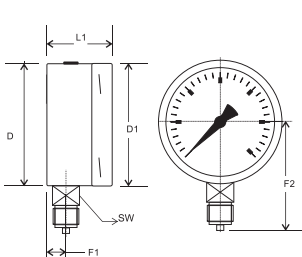
All specifications are subject to change without notice

FPM / 3H / V

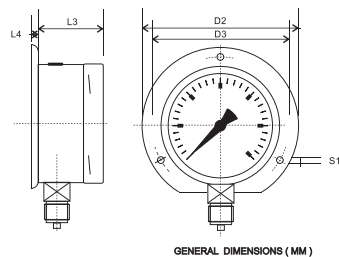


GAUGES WITH BOTTOM CONNECTION

DM / V



SM / V



	D	D1	D2	D3	D4	D5	D6	L1	L2	L3	L4	L5	L6
63													
100	99	101	132	118	107	132	118	52	52	50	5.5	5.6	4.9
160	159	161	192	178	167	192	178	52	52	50	5.5	5.6	4.9
250													
	L7	L8	L9	L10	L11	L12	F1	F2	F3	F4	S1	S2	SW
63													
100	16	4	47	6	47	30	15	90	40	32	5.5	5.5	22
160	16	4	47	6	47	30	15	119	40	32	6	6	22
250													

MARSH BELLOFRAM®
Group of Companies

9 Castle Park Queens Drive, Nottingham NG2 1AH England

Tel: (44) 115 993 3300 • Fax: (44) 115 993 3301 • e-mail: bellofram@aol.com • www.marshbellofram.com

LTUK09022